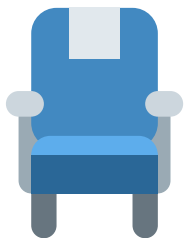


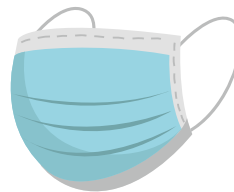


2021-2022

Back to School Transportation Important Information



**THERE WILL BE
ASSIGNED SEATING
PLANS WHICH
STUDENTS MUST
FOLLOW.**



**ALL STUDENTS ARE
REQUIRED TO WEAR
A MASK ON THE BUS
AS PER THE ALBERTA
GOVERNMENT**

*This policy will be reviewed on
September 27, 2021.*



**ALL STUDENTS WILL BE
ASKED TO SANITIZE
THEIR HANDS AFTER
BOARDING AND
BEFORE LEAVING THE
BUS**



**APPROVED MAP
MODIFICATIONS
WILL COME INTO
EFFECT ONLINE**

Please contact Southland Transportation at 403-526-4665 regarding route times and stops
Please contact MHCBE Transportation at 403-502-8351 regarding boundaries, eligibility &
bus stop location inquiries

PLEASE NOTE: No changes will be made to published bus route maps during the first
two weeks of school.

Any modified maps will go into effect Monday, September 13, 2021

**Medicine Hat Catholic
Board of Education
continues to work closely
with Southland
Transportation to create a
positive school bus
experience for all students.**



Southland Transportation

www.southland.ca/medicinehat
(403) 526-4655



MHCBE Transportation

www.mhcbe.ab.ca/transportation
(403) 502-8351