

# Accountability Pillar Results

October 2017

Alberta

## District Highlights

Medicine Hat Catholic is

**7.5%**

above provincial average in High School Completion Rate (3 yr).



MHCBE is in the "Very High" range in 8 categories measured.

Rutherford Scholarship Eligibility Rate 8.3% above provincial average.

PAT Participation Rates

**8.6%**

above provincial average.

PAT Acceptable

**10.6%**

above provincial average.

**11/16**

categories, Medicine Hat Catholic is above provincial averages.

**9/9**

categories MHCBE's First Nations, Métis & Inuit (FNMI) Program scores above provincial average.

## MonSignor McCoy High School Highlights

**0.7%**

Drop out rate. Compared to 3.0% in Alberta.



**9/14**

categories, MonSignor McCoy is above provincial average.

**6.6%**

above provincial average for Work Preparation.

Diploma Acceptable equal to provincial average. Diploma Excellence above provincial average.

## St. Mary's School Highlights

**6.6%**

above provincial average- PAT acceptable.

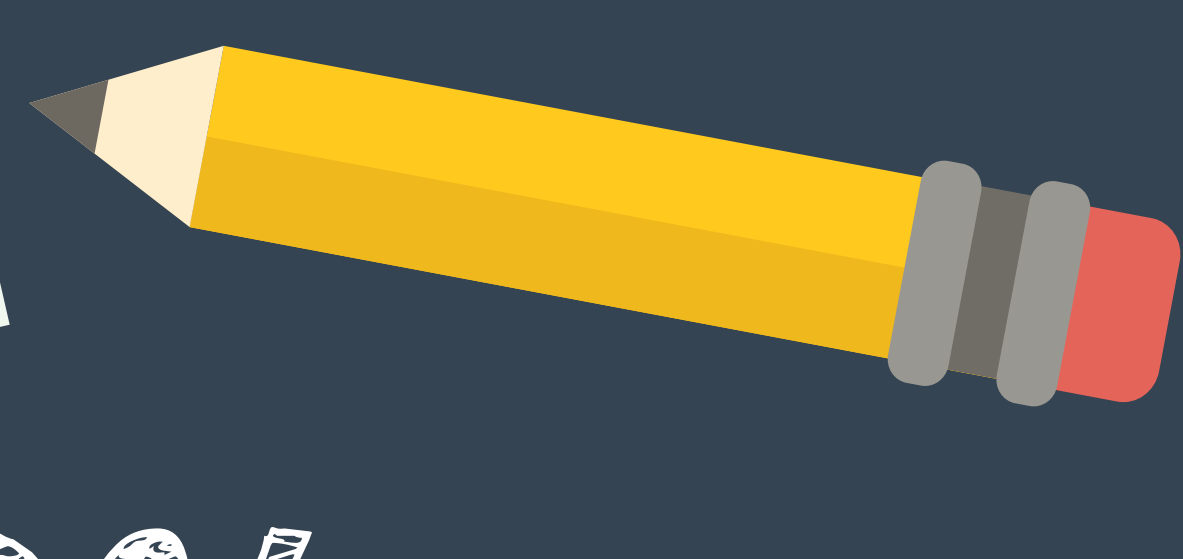
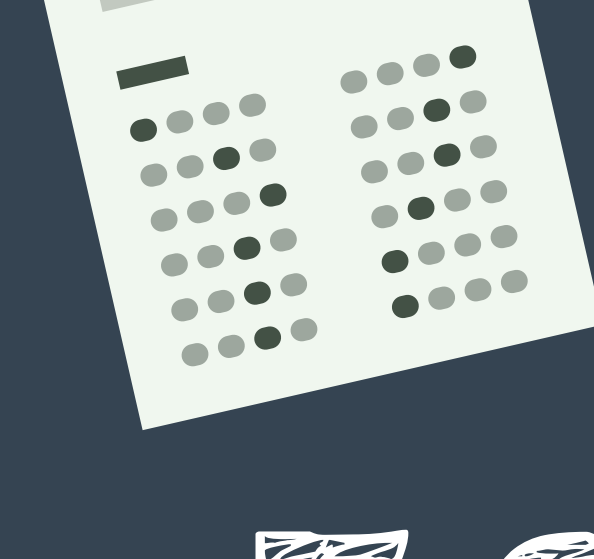


Program of Studies

**3.5%**

above provincial average.

## Notre Dame Academy Highlights



**16.8%**

above provincial average- PAT Acceptable.

**7.9%** above provincial average- PAT Excellence.

## St. Michael's School Highlights

**96.3%**

of those surveyed are satisfied with the program of studies offered at St. Michael's School. (5.4% higher than the province).



**7/9**

Categories St. Michael's School scored in the "Very High" range.

**7.6%**

above average- PAT acceptable.

In 8/9 categories St. Michael's School scored above provincial average.

## Mother Teresa School Highlights

**6/9**

categories Mother Teresa School is above provincial average.

**5/9**

categories Mother Teresa School is in the "Very High" category.

**97.8%**

**Satisfied**

In the Education Quality Category.

**90.9%**

Satisfied in Safe & Caring Category.

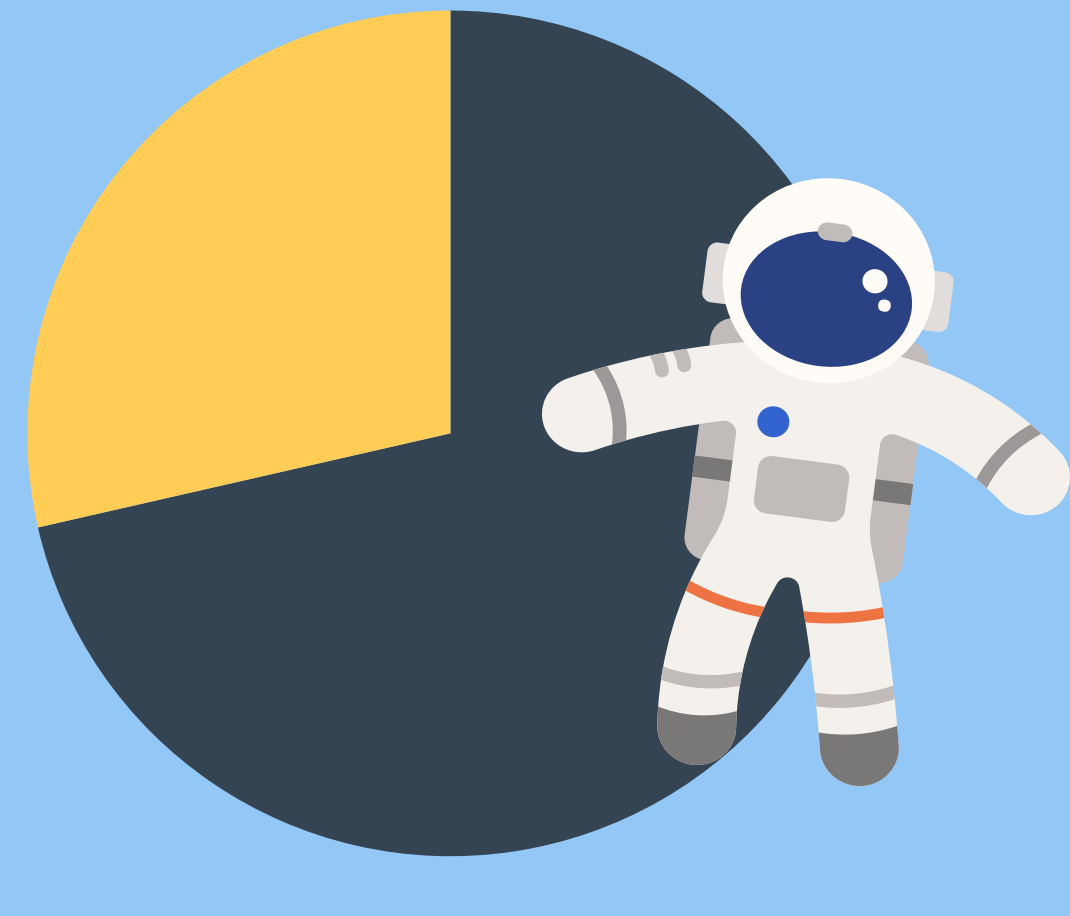


## St. Patrick's School Highlights

In the school Improvement Category, St. Patrick's is at

**88.3%**

(6.2 above provincial average)



**4/7**

categories, St. Patrick's scores in the "Very High" range.

## Ecole St. Thomas d'Aquin Highlights

**8/9**

categories, St. Thomas Aquinas scores above provincial average.

**13.6%**

Improvement in School Improvement Category over the last 3 years.



In 8 of 9 categories, St. Thomas Aquinas scores in the "Very High" range.

**100%**

Satisfied in Work Preparation Category



## St. Francis Xavier School Highlights

**97.6%**

Satisfied In Citizenship Category.



**94.9%**

in the Education Quality Category.



**8/9**

categories, St. Francis Xavier School scores above provincial average, and in the "Very High" range.

## St. Louis School Highlights

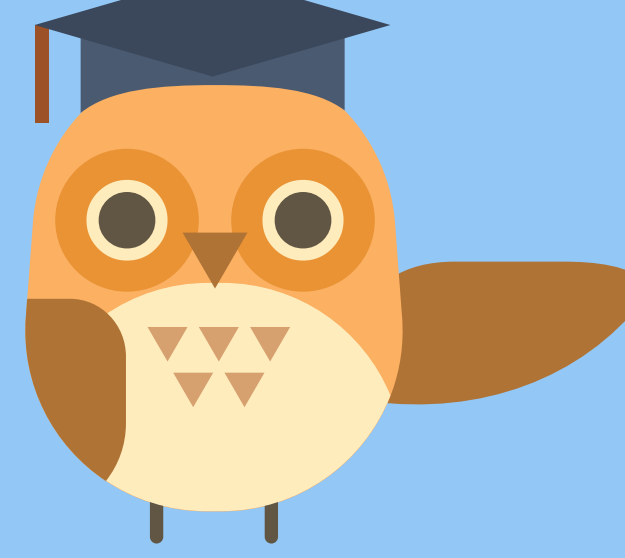
**97.1%**

of those surveyed are satisfied with the Education Quality at St. Louis School. (7% higher than provincial average).



**6/7**

categories, St. Louis School scored in the "Very High" category



## Grade 6 PAT Mark Analysis

	ACCEPTABLE	EXCELLENCE
MCHBE Grade 6 Language Arts	89.2%	17.4%
Provincial Average	82.5%	18.9%
MCHBE Grade 6 Mathematics	72.5%	7.9%
Provincial Average	68.4%	12.3%
MCHBE Grade 6 Science	88.2%	30.3%
Provincial Average	76.6%	29.5%
MCHBE Grade 6 Social Studies	87.1%	23%
Provincial Average	72.6%	22.4%



## Grade 9 PAT Mark Analysis

	ACCEPTABLE	EXCELLENCE
MCHBE Grade 9 Language Arts	91.5%	15.4%
Provincial Average	76.8%	14.9%
MCHBE Grade 9 Mathematics	79.8%	21.9%
Provincial Average	66.2%	18.7%
MCHBE Grade 9 Science	82.3%	21.5%
Provincial Average	73.2%	21.3%
MCHBE Grade 9 Social Studies	80.6%	20.4%
Provincial Average	66.3%	20.2%

### Sources:

<https://education.alberta.ca/accountability-pillar/provincial-results/>